

## INVESTMENT OPPORTUNITY - PURCHASE OFFER

**99.91 % of the shares of the largest construction company in the Slovak**

**Republic of Company DOPRASTAV, a. s.**

**For selling price: 55 million Euro**

<b>Key Facts:</b>
▪ Top-tier player in the Slovak construction market
▪ 63 years history – established in 1953
▪ Main focus on transport infrastructure – motorways, railways, bridges, tunnels
▪ Completes delivery of water – management constructions and structures within the sectors of commercial and residential construction
▪ More than 1000 employees
▪ More than 420 km of motorways and roads, tens of kilometres of bridges
▪ Numerous awards on the „Construction of the Year“ titles in Slovakia and abroad

### Financial data:

	<b>Consolidated data</b>		
	<b>Year 2018</b>	<b>Year 2017</b>	<b>Year 2016</b>
<b>Sales</b>	260 733	299 834	285 177
<b>Profit</b>	16 030	15 672	13 485
<b>Additional value</b>	40 054	45 318	52 198
<b>Pretax profit</b>	15 912	16 024	13 194
<b>Profit after tax</b>	16 311	23 441	13 062
<b>Total assets</b>	220 779	198 477	196 985
<b>Non - current assets</b>	73 557	75 457	59 349
<b>Current assets</b>	147 222	123 020	137 636
<b>Equity and Liabilities</b>	220 779	198 477	196 985
<b>Equity</b>	96 147	79 880	56 578
<b>Liabilities</b>	124 632	118 597	140 407
<b>Average number of employees</b>	1 344	1 424	1 403
<b>Productivity from Revenue (EUR)</b>	193 998	210 558	203 262
<b>Return on Sales (%)</b>	6,10	5,34	4,63

\*All financial data are in thousands of EUR (unless otherwise specified)

# COMPANY PROFILE

The joint-stock company Doprastav, a.s. belongs to the largest construction companies in the Slovak Republic. During its existence it has constructed a large number of civil engineering works. Because of its importance for the society the company is continuously striving to contribute by its share not only to the development of the construction profession but to Slovakia's social development as well. To build beneficial high quality civil engineering works for people to the satisfaction of its clients. That is the company's main commitment.

During the past 60 years of existence of the company Doprastav the construction of transport-related structures and buildings in the SR represented the main production programme. Not only in the past, but also in the difficult times of the past years the company was always characterised as a serious corporation, based on the correctness, professionalism and expertise, with strict adherence to quality and meeting deadlines. The fulfilment of obligations toward our clients, suppliers and subcontractors is one of the company's most significant values. The staff and labour represent another decisive value of our company when on the level of their expertise, morale and quality depends the quality and expertise of the whole company.

The company will continue to build on its time-proven values, among which belong above all the:

- professionalism and expertise,
- team spirit, using one's knowledge and skills to company's benefit,
- correctness towards own employees,
- seriousness, correct behaviour and business ethics,
- observance of client's interests and his contentment,
- meeting the liabilities to suppliers and subcontractors.

Since long time the core of Doprastav's business activities is the construction of motorways, expressways and roads. In its history the company has constructed nearly 480 kilometres of motorways and limited-access roads (expressways), more than 90 kilometres of bridges built by different construction methods, thousands of kilometres of Class I, II and III roads and streets. During the company's functioning many of these Works were prized by different awards, whether for the architecture or as the Construction of the Year.

We highly appreciate all these awards because they represent an appraisal of our many years' work. Despite the difficult situation on the construction market in the SR over the past years, the expert community still perceives our company positively.

However the results of company's endeavour are not linked only with motorways and roads. In recent years there is an increasing number of upgrading of railway lines, construction of exploratory adits and tunnels as well as the completed sewage networks and sewage-treatment plants. A number of complexes of structures of industrial development and structures and buildings of civic facilities need to be added to these Works as well.

# DOPRASTAV'S PRODUCTION PROGRAMME INCLUDES IN PARTICULAR THE FOLLOWING TYPES OF CONSTRUCTION WORKS:

## **ROADS AND MOTORWAYS**

- Earthworks
- Laying of all pavement structural layers
- Asphalt surfacing
- Concrete pavement
- Production of all types of traffic signs including their supports – gantries

## **BRIDGES**

- Complete construction of bridges
- Production and erection of bridge superstructures of precast prestressed members
- Girders, beams and sections of segmental bridge superstructures produced at the own plant in Senec
- Balanced cantilever construction method with the application of plant and equipment for the construction of large-span bridges
- Bridge structures of cast-in-situ concrete constructed on stationary scaffolding
- Travelling formwork systems
- Bridges constructed by the incremental launching construction method
- Steel bridges
- Production and mounting of bridge bearings and bridge movement joints
- Construction of reinforced-concrete and prestressed bridge structures for railways and rail transport works

## **RAILWAYS AND RAIL TRANSPORT WORKS**

- Rehabilitation of track foundation and building of railway embankments
- Reconstruction and construction of railway bridges and overpasses
- Complete reconstruction of railway stations and building of platform
- Construction of noise barriers
- Construction of cable-protection duct lines

## **WATER ENGINEERING WORKS AND ECOLOGICAL STRUCTURES**

- Complete delivery of sewage-treatment plants, water treatment plants, water reservoirs
- Construction of sewage networks of all diameters
- Construction of water-supply lines of all diameters
- Construction of water works
- Execution of asphaltic sealing of water works, dams and artificial lakes
- Regulation of watercourses and rivers
- Construction of preventive flood-protection structures and systems

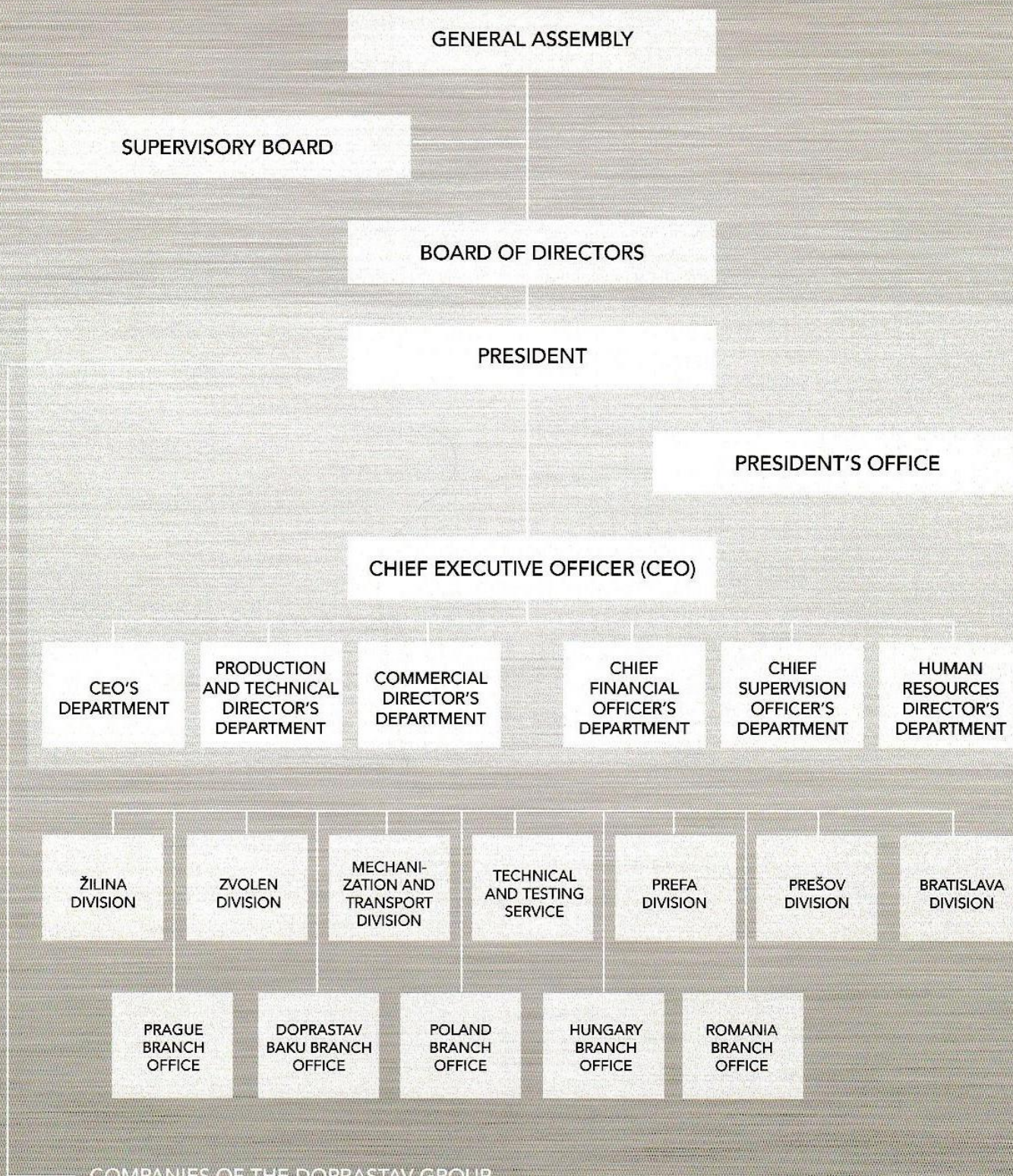
## **OTHER CIVIL ENGINEERING WORKS**

- Construction of large investment units
- Reconstruction and construction of airports
- Reconstruction and construction of tunnels by different construction methods
- Construction of sports and recreation facilities (golf resorts, racing ring)

## **BUILDING CONSTRUCTION**

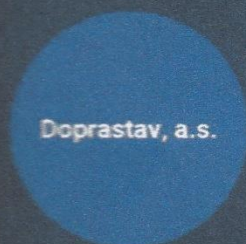
- Complete deliveries of industrial, residential and civil structures and buildings and their reconstruction
- Skeletal frames for all types of structures of cast concrete, precast units and steel
- Construction of foundations
- Reconstructions and external thermal insulation of civil engineering structures

# Organizational structure of the company as per 31.12.2018



COMPANIES OF THE DOPRASTAV GROUP

# DOPRASTAV GROUP CHART



DOPRASTAV SERVICES, s.r.o.	100%		
Doprastav Development, a.s.	100%	Arethusa s. r. o.	100%
TESScontrol, s.r.o.	100%	REVGAMA LIMITED	100%
Doprastav MDZ, s.r.o.	100%	Asfalt Beluša s.r.o.	50%
DPS RE, s.r.o.	100%		
Doprastav International, s.r.o.	100%		
Doprastav Construction s.r.o.	100%		
TERRAcontrol, s.r.o.	100%		
DOPRASTAV POLSKA sp. z o. o.	100%		
Doprastav CZ, s.r.o.	100%		
GEOstatik a.s.	70%	GEOkospers, s.r.o	100%
Slovenské Asfalty s.r.o.	50%		
Doprastav - PS s.r.o.	50%		
DOPRA - VIA, a.s.	40%		
YOSARIA PLAZA, a.s.	11%		